

National Quality Benchmark  
National Contract-abiding And Credit-worthy Enterprise  
High-tech Enterprises



To Create Value For Customer  
To Seek Benefit For Staff  
To Accumulate Wealth For Society.



## HENAN DAFANG HEAVY MACHINE CO.,LTD

Web: [www.hndfcrane.com](http://www.hndfcrane.com) Email: [sales@hndfcrane.com](mailto:sales@hndfcrane.com)  
Tel: +86-373-5818299 FAX: +86-373-2157000  
Address: Changnao Industrial District, Xinxiang City, Henan Province, China. 453000.



# DAFANG CRANE

## OVERHEAD CRANE & GANTRY CRANE

### PRODUCT SMPLE





# CONTENTS

## OVERHEAD CRANES

Single Girder Overhead Cranes .....	01
Double Girder Overhead Cranes .....	05
Worker Station Crane .....	08
European Type Overhead Crane .....	11

## GANTRY CRANE

Single Girder Gantry Cranes .....	13
Double Girder Gantry Crane .....	17
Trussed Gantry Crane .....	21
More Product Types .....	23

## COMPANY PROFILE

Henan Dafang heavy machine Co., Ltd (hereinafter referred to as DafangCrane) was founded in 2007, it mainly deals in designing, researching, manufacturing, and selling bridge and gantry cranes, electric hoist, crane spares, steel structures and etc. DafangCrane has been awarded "top 500 Chinese machinery enterprise", "contract credit enterprise in China", "famous product in Henan province", "High-tech enterprise in Henan province", "quality credit AAA industrial enterprises in Henan province" and etc.

We are located at Changyuan town, Henan province which has a good reputation of "the hometown of Crane in China", which covers an area of 850 thousand square meters with registered capital 230 million RMB, has a staff of more than 1600 people. Our company has powerful technical research strength, the independently developed multi-function crane, light duty series product(electric hoist, single girder/double girder overhead crane and gantry crane) and road & bridge handling equipment, and have been put into use in metallurgy, electricity, high-speed rail, machinery, mining, petrochemical industry and etc. we have a high reputation in home and abroad currently. The annual output of a Single girder (electrical suspension crane) has reached more than 25000 sets, a double girder crane of more than 1800 sets. Dafang-crane is a large crane manufacturing enterprise, which has the largest workshop area, different types of cranes, fast delivery and most economic products. We also have all kinds of advanced mechanical machining equipment and physical, electrical, hydraulic, chemical testing methods. Introduce and establish an international advanced management system, good sales network, and strong technical development power to be the world-class crane manufacturing enterprise to meet the needs of different market requirements.

DafangCrane takes "for the customer, for employee, for society" as the core values to provide professional and efficient service for customers, to build stable and win-win relationships with customers, to create a comfortable working environment, good study environment, reasonable payment, and good development space for employee, to provide more employment opportunity for society, to make more tax income for the country, to build a conservation-minded, civilized, harmonious society.



**Capacity: Up to 20t**

**Span Length: Up to 31.5m**

**Applications:** This crane is mainly used in steel stock yard, mine, the concrete industry, warehouse, factory, harbor and ship building, etc. overhead crane a common feature of many industrial workplaces serving various lifting applications.

Single girder overhead cranes are the most cost effective purchase for capacity 20 tons and 18m span. Is usually classed as 3 types, LD type , low headroom type, LDP type.

Single girder overhead crane is common lifting equipment which consists of single girder beam, monorail hoist, end carriage with motor and total panels. It can be installed on the steel columns. As it will be installed on the upper of the factory, have maximum space utilization.

## Different Types Of Single Girder Overhead Crane



**LD Single Girder Overhead Crane**

- Widely used for normal workshop
- The main girder is U type in the production process, and fully finished one time, reduce the stress concentration point.
- Cheap price with stable performance, reasonable structure, strong rigidity and durability.



**Low Headroom Type Overhead Crane**

- Usually used for the workshop which upper space is limit, It's can have higher lifting height, and it is more space-saving.
- Low headroom type electric hoist traversing below the main girder, but on both side of main girder.
- Lifting mechanism is equipped low headroom electric hoist, the structure is different. And more artistic.



**LDP Type Single Girder Overhead Crane**

- Usually used for the workshop whole height is limit, but customer want to reached a max lifting height.
- The main girder is box type. Low headroom type electric hoist traversing on the main girder.
- The hoist is on one side of the beam, it can achieve higher lifting height.

## Product Details



### End Beam

To linked with main girder, for crane traveling. Usually have normal type and european type end beam.



### Main Girder

Linked with end beam, for hoist traversing. usually design normal type and box type to meet customer's request.



### Girder Section

Make main girder divided into two or more parts, so it is more convenient for transport, and assemble.



### Electric Hoist

Traveling on main girder, for crane lifting. Usually equipped CD/MD/ Low head room hoist by different crane.



### Electric Equipments

For crane and hoist power supply, usually we equipped Schneider, Yaskawa, \ABB brand.



### Cable

Hang on the coil holder, for hoist power supply, normal we equipped flat type cable, also have explosion-proof

## Customer Cases & Delivery Site



11 Sets Of NLH Overhead Crane Exported to Qatar



12.5t LDC Model Low-headroom Single Girder Overhead Crane For Sale to Kenya

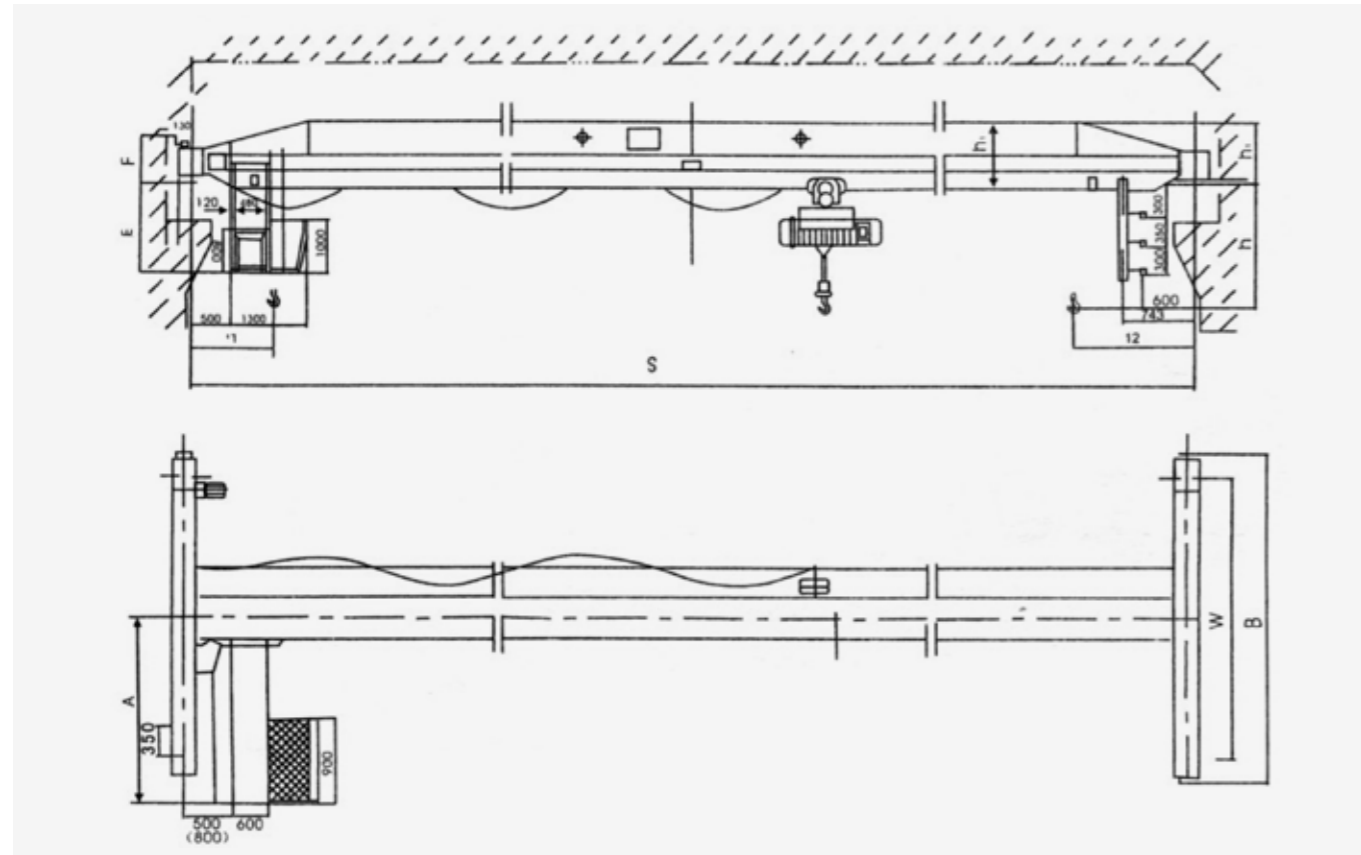


15T QDY and 6T LDY Overhead Cranes Exported to Nigeria



5 Sets Of Low Head Room Type Single Girder Overhead Cranes Exported to Uganda

## Outer Size Diagram



## Technical Specifications

<b>Crane Travelling mechanism</b>	Working Speed	m/min	20 Ground	30 Ground	45 Room Ground	60 Room Ground	70 Room Ground
	Decelerate Speed Rate		58.78	39.38	26.36	19.37	15.88
	Motor Type		YSE80 <sub>2</sub> -4	YSE80 <sub>2</sub> -4	YSE80 <sub>2</sub> -4	YSE90L-4	YSE90L-4
	Motor Power	kw	2×0.8	2×0.8	2×0.8	2×1.5	2×1.5
	Motor Rotational Speed	r/min	1200	1200	1200	1200	1200
<b>Lifting mechanism (electric hoist) &amp; electric hoist travelling mechanism</b>	Electric hoist CD <sub>1</sub> MD <sub>1</sub>		CD <sub>1</sub> Type MD <sub>1</sub> Type				
	V1 Lifting Speed	m/min	8 (7) 8/0.8 (7/0.7)				
	H Lifting Height	m	6 9 12 18 24 30				
	V2 Moving Speed	m/min	20; 30				
Motor		Cone Squirrel-Cage Model					
<b>Working System</b>	A3						
<b>Power</b>	Three-phase 380V 50Hz						
<b>Wheel Diameter</b>	Ø 270mm						
<b>Width of trail</b>	37-70mm						

## 1-10T Parameters Table

Lifting Weight	Span (m)	Total Weight (t)		Max. Wheel Pressure(t)		Min. Wheel Pressure(t)		h <sub>1</sub>	B	w	Basic Size (mm)		h	H <sub>1</sub>
		Ground Operation	Air Operation	Ground Operation	Air Operation	Ground Operation	Air Operation				l <sub>1</sub>	l <sub>2</sub>		
1T	8	1.69	2.09	1.09	1.39	0.41	0.41	500	2000	1500	796	1274	810	490
	10	1.88	2.28	1.14	1.44	0.46	0.46	500	2000	1500	796	1274	810	490
	15	2.47	2.87	1.30	1.60	0.62	0.62	595	3000	2500	796	1274	860	490
	19.5	3.00	3.40	1.44	1.74	0.76	0.76	650	3000	2500	796	1274	870	530
	25.5	4.44	4.84	1.65	1.95	1.05	1.05	800	4000	3500	796	1274	890	660
	31.5	6.78	7.18	2.24	2.54	1.64	1.64	1000	4500	4000	796	1274	930	820
2T	8	1.82	2.22	1.65	1.95	0.41	0.41	580	2000	1500	871.5	1292.5	1000	490
	10	2	2.4	1.7	2	0.46	0.46	580	2000	1500	871.5	1292.5	1000	490
	15	2.64	3.09	1.88	2.18	0.64	0.64	700	3000	2500	871.5	1292.5	1060	580
	19.5	3.85	4.25	2.18	2.48	0.94	0.94	800	3000	2500	871.5	1292.5	1080	660
	25.5	5.86	6.26	2.5	2.8	1.15	1.54	980	4000	3500	871.5	1292.5	1130	835
	31.5	7.96	8.36	3.04	3.14	1.91	1.91	1100	4500	4000	871.5	1292.5	1178	880
3T	8	1.93	2.33	2.16	2.46	0.42	0.42	650	2000	1500	818.5	1291	1150	530
	10	2.13	2.53	2.22	2.52	0.48	0.48	650	2000	1500	818.5	1291	1150	530
	15	3.25	3.65	2.5	2.8	0.76	0.76	800	3000	2500	818.5	1291	1170	660
	19.5	4.28	4.68	2.8	3.1	1.06	1.06	880	3000	2500	818.5	1291	1185	725
	25.5	6.2	6.6	3.08	3.38	1.47	1.47	1050	4000	3000	818.5	1291	1275	880
	31.5	8.71	9.11	3.72	4.02	2.09	2.09	1220	4000	3500	818.5	1291	1325	1050
5T	8	2.2	2.6	3.29	3.59	0.43	0.43	720	4500	4000	841.5	1310	1303	580
	10	2.42	2.82	3.35	3.65	0.49	0.49	720	4500	4000	841.5	1310	1303	580
	15	3.53	4.13	3.7	4	0.84	0.84	950	3000	2500	841.5	1310	1388	745
	19.5	4.57	4.97	3.93	4.23	1.07	1.07	980	3000	2500	841.5	1310	1363	835
	25.5	6.51	6.91	4.16	4.46	1.51	1.51	1150	4000	3500	841.5	1310	1408	890
	31.5	8.96	9.46	4.79	5.19	2.12	2.12	1260	4500	4000	841.5	1310	1468	1065
10T	8	2.95	3.55	5.2	5.5	0.46	0.46	880	2000	1500	1235	1935	1470	735
	10	3.24	3.84	5.46	5.76	0.55	0.55	880	2000	1500	1235	1935	1470	735
	15	4.7	5.3	6.06	6.36	0.9	0.9	1080	3000	2500	1235	1935	1515	880
	19.5	5.7	6.3	6.41	6.71	1.27	1.27	1150	3000	2500	1235	1935	1515	890
	25.5	8.68	9.08	7.15	7.45	1.94	1.94	1300	4000	3500	1235	1935	1600	1100
	31.5	12.64	13.04	8.19	8.49	2.93	2.93	1500	4500	4000	1235	1935	1650	1200

Tips: This is just a part of the reference, contact us to get more detailed product data for free!



**Capacity: up to 800t**

**Span Length: up to 37.5m**

**Applications: Suitable for machining workshop, metallurgy industry workshop, warehouse, stockyard, power station, light and textile industry workshop, food industry workshop.**

Double girder overhead crane is composed of main beam, cross traveling mechanism, long traveling mechanism, and electrical equipment. If you need to transport heavy loads more than 50t across large areas or have high work duty, then double girder traveling cranes are your first choice.

Double girder overhead cranes can be fitted with maintenance platforms under motors, on the rigging or over the full span of the roller beam. It can be offered for a very large range of spans, heights of lift as well as customized speeds depending on your application. They can also be provided with multiple hoisting trolleys running on the same bridge or auxiliary hoisting mechanisms on the main trolley.

## Different Types Of Double Girder Overhead Crane



QD Type Double Girder Overhead Crane

- Suitable for all kinds of working conditions, work duty can be divided A5 and A6.
- Used in mechanic processing workshop, metallurgical mills, warehouses, goods yard and power station.
- The entrance of cabin has three ways from side entrance, end entrance and top entrance.

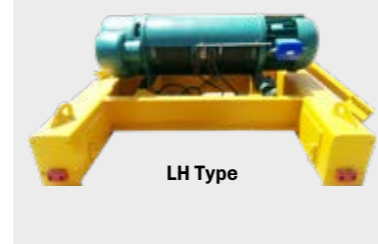


LH Type Double Girder Overhead Crane

- It is mainly used in the general workshop, Lifting capacity: 5ton-32ton, working level A3~A4.
- Application to workshop, warehouse, goods yard, power station, the work duty is less than QD type.
- The price is more cheape. Drive by electric: controlled by cabin and remote control.



QD Type



LH Type

## Product Details



### Trolley

With heavy capacity and high work duty, specifically for lifting that requires accurate and smooth movement.



### End Beam

Wheels with roller bearings and permanent lubrication. Motor with smooth starting and stopping characteristic.



### Reinforcement Structure

Main beam with strong box type and standard camber. There will have reinforcement plate inside the main beam.



### Wheel

Equipped with high quality forged or casting wheel, which will have heat treatment to ensure wheel's performance.



### Division Part

3 times connection steel plates and high strength bolts can ensure the division part's rigidity.



### Steel Structure

Q235/Q345 carbon structural steel. And all steel plates for double girder crane must have shot blasting.

## Customer Cases & Delivery Site



6sets QDY Metallurgical Double Girder Overhead Cranes exported to India



6 Sets Overhead Crane And Gantry Crane Exported To Qatar

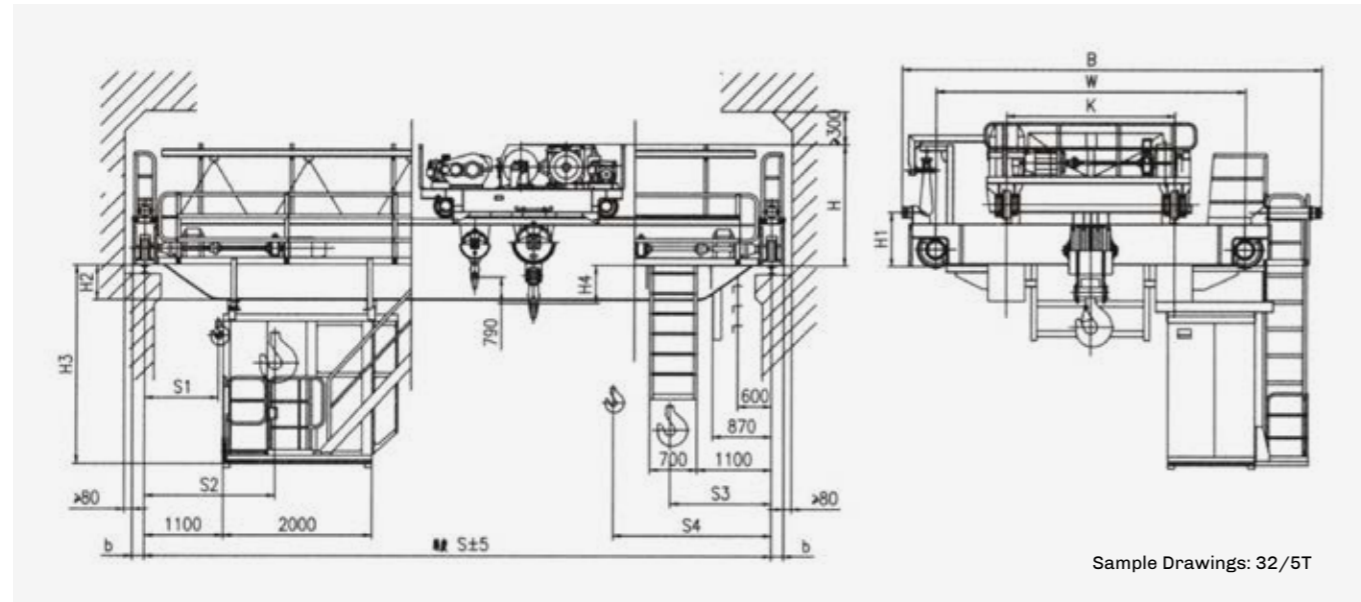


2 Set 5T/20T LH Model Double Girder Overhead Crane Delivery To Karachi



5t,15, 50t Double Girder Overhead Crane Exported to India

## Outer Size Diagram



## Technical Specifications

Cap (t)	Cap-Main	16	20	32	50	75
	Cap-Auxiliary	3.2	5	5	10	20
Span (m)		10.5/13.5/16.5/19.5/22.5/25.5/28.5/31.5				
Lifting Height (m)	Lifting Height-Main	16	12	16	12	20
	Lifting Height-Aux.	18	14	18	16	22
Duty		A5/A6	A5/A6	A5-A6	A5-A6	A5-A6
	Main	7.9/10.7	7.1/9.7	7.5/9.5	5.9/7.8	3.8/5
Speed (m/min)	Auxiliary	14.5	12.7	12.7	12.7	7.2
	Crab Travelling	44.6	44.6	42.4	38.5	38.4
	Trolley Travelling	74.7/86.4	74.7/86.4	64.6/89	74.6/86.8	53.9/77.8
Limit Dimension (mm)	S1	1040	1030	1070	1005	1015
	S2	1850	1930	2050	2200	3260
	S3	1500	1420	1700	2000	2475
	S4	2310	2320	2680	3195	3720
Main Dimensions (mm)	H	2095	2097	2343	2740	3302
	H1	815	815	905	1055	950
	H2	80	80	90/92	-79	290/292
	H3	2500	2500	2510/2512	2341	2710/2712
	H4	746	718	711	1026/1016	872/870
	K	2000	2000	2500	2500	4400
	W	4000/4400	4000/4400	4650	4800	/
	B	5998/6278	5998/6278	6478/6588	6828	8828
	b	230	230	260	300	300
	Max. Wheel Loading(KN)		140/145	162/167	236/240	322/335
Power(KW)		51.1/64.5	55.6/69	78.3/96.3	115.5/131.5	128/158
Power Supply		3-Phase A.C.50Hz 380V				

Tips: Take the span of 10.5m as an example.  
This is just a part of the reference, contact us to get more detailed product data for free!

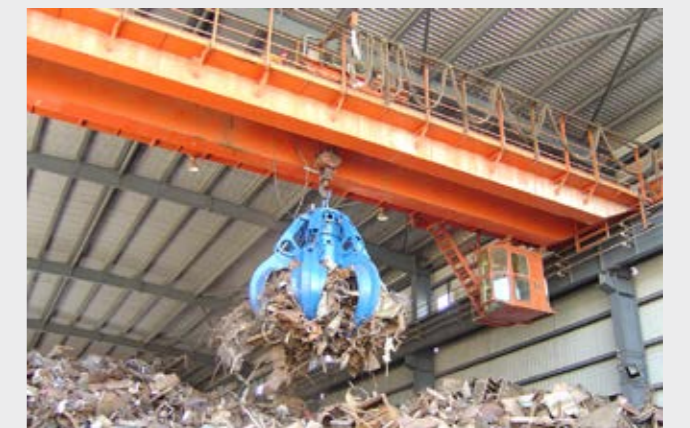
## More Types Of Product Display



## Rotational Magnet Overhead Crane



## QZ Grab Bucket Overhead Crane





**Capacity:** 125kg-2000kg      **Span:** 1.8-10m  
**Lift Height:** up to 5m      **Working Duty:** A3-A5  
**Application:** used for flat material conveying, and is suitable for workshops, warehouses and other places.

Monorail cranes are most effective in production applications where materials are repetitively moved from one point to another. The monorail hoist and trolley run on a single stationary beam, normally include H-beam or I-beam.

**High reliability and stability**

Light crane system is composed of standard modular parts, which can guarantee mass and high quality production.

**Strong adaptability**

Light crane system can flexibly design and install according to the needs of each station in the factory. It can be assembled at will from fixed point to high accuracy multi-point and multi-beat automated transportation lines.

**Convenient installation and economic efficiency**

Standard module parts can be used only by bolt connection, which can save the factory floor space and improve enterprise benefits. Reduced plant cost, low power, low energy consumption and high comprehensive benefits.



**More Types Of Product Display**





**Capacity: up to 20t**                      **Span Length: up to 31.5m**  
**Applications: Suitable for warehouses, material stocks and general factory site. They are especially suitable for material handling that requires precise positioning, Precision assembly of large parts and other occasions.**

European type overhead crane are compact lifting machinery designed and manufacturing in strict accordance with FEM and DIN standard, which with advanced technology and beautiful design, and the driving mechanism adopts a three-in-one reducer (hard tooth surface reducer, frequency conversion brake motor), It equipped with low headroom hoists/trolley and variable frequency drives on both hoist and trolley.

Compare with other traditional crane, the limit distance between hook and wall is the minimum, the net height is lowest, can maximum the lift height, practically increase the efficient work space. Due to cranes' light dead weight, and minimum wheel load, can largely reduce the workshop's cost.

### Advantages

Light dead weight, light wheel load, small boundary dimensions, dependoble performance, eady operation.

Litht wheel load and small boundary dimensions can reduce the costs of plant construction, save capitol investment of lighting, heating snd so on.

Using high-quality components can reduce failure rete and maintenance costs.

On the other hand, the total installed power ( power consumption ), low consumption of total power can reduce the costs.



### More Types Of Product Display







**Capacity: Up to 50t**      **Span Length: Up to 50m**  
**Cantilever Length: 3m-8m**      **Control Mode: Pendant control / Wireless remote control / Cabin control**  
**Applications: High strength, good rigidity and high stability, low cost. Cover more work area, no need to built warehouse.**

The gantry crane is not restricted by the workshop steel structure, and owing to the simple structure and convenient installation, used typically for activities in steel warehouse, precast yards, construction sites, port, train station, power plant and other outdoor applications.

The single girder gantry crane is mainly composed of steel structure gantry, crane traveling mechanism, electric hoist, and electric control system. Normally, single girder gantry cranes are most widely used and often in open storage yard.

According to different situations, single girder gantry crane have three type: L single girder gantry crane, MH single girder gantry crane, truss type single girder gantry crane.

## /// Different Types Of Single Girder Gantry Crane



A (MH) Type Single Girder Gantry Crane

- Suitable for indoor and outdoor, Strong box type.
- Crane can be designed with two side cantilever, one side cantilever or no cantilever.



L Type Single Girder Gantry Crane

- Crane leg is 'L' type, is it more convenience for large size goods from middle position move to cantilever without any dimensional limit of support leg.
- Crane can equipped with two type lifting mechanism, one is steel wire rope hoist, the other one is trolley.



Truss Type Single Girder Gantry Crane

- Crane main girder and support leg both with truss type, it is more suitable for open area, can bear strong wind pressure.
- Crane can be design with full truss type or main girder with truss type, support with box girder or on the contrary.

## /// Product Details



### Main Beam

Q235/Q345 carbon structural steel. Strong box type with standard deflection.



### Support Legs

Support legs support the main beam and lift mechanism. It can be box type and trussed type.



### Support Beam

The support beams is dismountable. To largely save sea freight, we will try to reduce the goods volume.



### Ground Beam

Ground Beam connect with support legs, travelling on the floor rail. Use reliable motors, ensure stable travel.



### Maintenance Cage

Maintenance cage is a small mechanism, workers can stand on this cage and offer repair or maintenance for crane.



### Wheel

Light capacity equipped with general LD wheel, heavy capacity equipped with high quality forged wheel or wheel group.

## /// Customer Cases & Delivery Site



1set 10t Trussed Single Girder Gantry Crane Exported to Philippines



3 Sets of MH10t-S25m-H10m Single Girder Gantry Cranes For Sale to Saudi Arabia

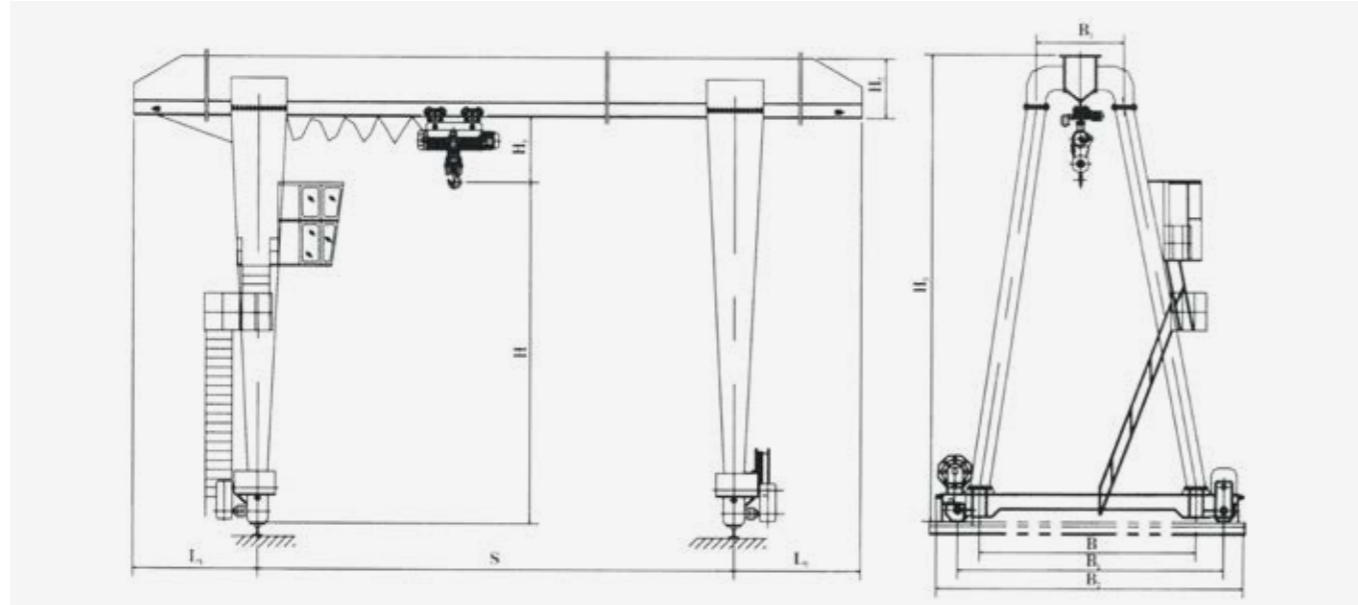


1 Sets Of 5t-S16m-H6m Single Girder Gantry Crane For Sale to Mongolia



20t Low Head Room Type Single Girder Gantry Crane Exported to Tunisia

## Outer Size Diagram

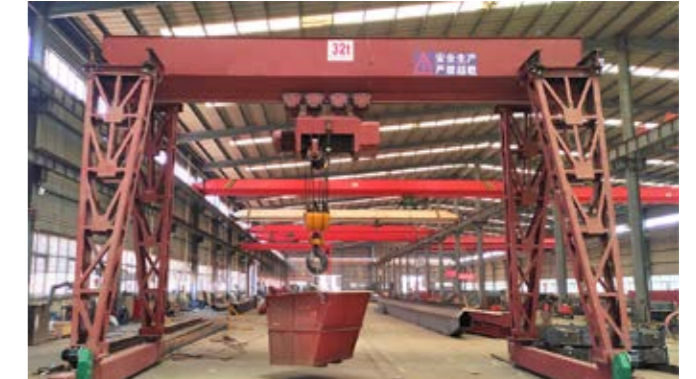


## Technical Specifications

Lifting Capacity (t)	3	5	10	16
Span (m)	20	20	20	20
Lifting Height (m)	6/9	6/9	6/9	6/9
<b>TRAVELLING MECHANISM</b>				
Travelling Speed-Grond (m/min)	20	20	20	20
Travelling Speed-Controlingroom (m/min)	30	30	30	30
Motor-Grond	ZDY <sub>1</sub> 22-4/1.5×2	ZDY <sub>1</sub> 22-4/1.5×2	YZR 132M2-6/4×2	YZR 132M2-6/4×2
Motor-Controlingroom	ZDR <sub>1</sub> 12-4/1.5×2	ZDR 12-4/1.5×2	YZR 132M2-6/4×2	YZR 132M2-6/4×2
Reducer	LDH Drive	LD Drive	ZSC400	ZSC400
Wheel Diameter(mm)	Φ370	Φ270	Φ400	Φ400
<b>ELECTRIC HOIST</b>				
Type	MD <sub>1</sub>	CD <sub>1</sub>	CD <sub>1</sub>	CD <sub>1</sub>
Lifting Speed (m/min)	0.8/8	8	7	3.5
Travelling Speed (m/min)	20	20	20	20
Motor-Lifting	ZDS <sub>1</sub> 0.4/4.5	ZD <sub>1</sub> 41-4/7.5	ZD <sub>1</sub> 51-4/13	ZD <sub>1</sub> 51-4/13
Motor-Travelling	ZDY <sub>1</sub> 12-4/0.4	ZDY <sub>1</sub> 21-4/0.8	ZDY <sub>1</sub> 21-4/0.8×2	ZDY <sub>1</sub> 21-4/0.8×2
<b>THE CRANE WEIGHT</b>				
Grond	11300/12600	13600/15200	19600/21600	23300/25500
Controlingroom (kg)	12100/13800	14400/16400	20400/22900	24200/26800
Max.Wheel Loading (kg)	44/50	70/75	113/118	165/174
<b>BASIC DIMENSIONS (mm)</b>				
L <sub>1</sub>	5000	5000	5000	4000
L <sub>2</sub>	5000	5000	5000	4000
H <sub>1</sub>	1120	1160	1350	2300
H <sub>2</sub>	800	1000	1200	2100
H <sub>3</sub>	7785/10785	8160/11160	8550/11500	10400/13400
B	5500/6500	4500/5500	4500/5500	5500/6000
B <sub>1</sub>	6000/7000	5500/6500	5500/6500	6500/7000
B <sub>2</sub>	6500/7500	6000/7000	6000/7100	7000/7500
B <sub>3</sub>	1500	1500	1600	1600

Tips: Take the span of 20m as an example.  
This is just a part of the reference, contact us to get more detailed product data for free!

## More Types Of Product Display





**Capacity: Up to 800t**      **Span Length: Up to 100m**  
**Cantilver Length: 5m-15m**      **Control Mode: Pendantcontrol / Wireless remote control / Cabin control**  
**Applications: High strength, good rigidity and high stability, low cost. Cover more work area, no need to built warehouse.**

The double girder gantry crane is especially suitable for the heavy working frequency, and heavy used places, suitable for high work duty situation. It has the characteristics of compact structure, good manufacturability, flexible operation, strong carrying capacity, high site utilization, large operating range, wide adaptability, strong versatility, stable and reliable operation, etc.

Include single girder gantry crane, double girder gantry crane, semi gantry crane, trussed gantry crane. Suitable for indoor and outdoor usage.

Advantage: cover more work area, no need to built warehouse. Suit for both of outdoor and indoor.

## Different Types Of Double Girder Gantry Crane



A Type Double Girder Gantry Crane

- Suitable for indoor and outdoor.
- Gantry crane is designed for maximum flexibility and reduces structural and rail maintenance to a minimum.



Truss Type Double Girder Gantry Crane

- Crane main girder and support leg both with truss type, it is more suitable for open area, can bear strong wind pressure.
- Crane self-weight is lighter than the single girder gantry crane with box girder, also will reduce the cost.



U Type Double Girder Gantry Crane

Crane design with U type, is it more convenience for large size goods from middle position move to cantilever without any dimensional limit of support leg, like gantry crane which used in the hydropower station with very large wheel gauge.

## Product Details



### Crane Saddle

When gantry crane have cantilever, the design will add crane saddle to ensure structure's rigidity.



### Main Beam

Main beam with strong box type and standard deflection. The main weld line is made by submerged-arc welding.



### Travel Trolley

To reduce crane wheel pressure, need to increase crane wheel, so need to use crane travel trolley.



### Trolley

Winch is most crucial mechanism for crane, which have reliable structure equip with drum, motors, brake, and reducer.



### Ground Beam

Ground beam connect the support legs and crane travel trolley.



### Support Legs

Each gantry crane have four pcs support legs, which connect gantry crane's main beam and ground beam.

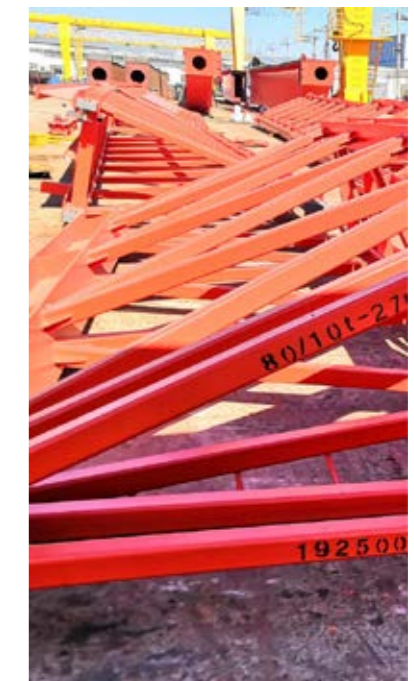
## Customer Cases & Delivery Site



70t-S19m-H12m Double Girder Truss Gantry Crane to Qatar

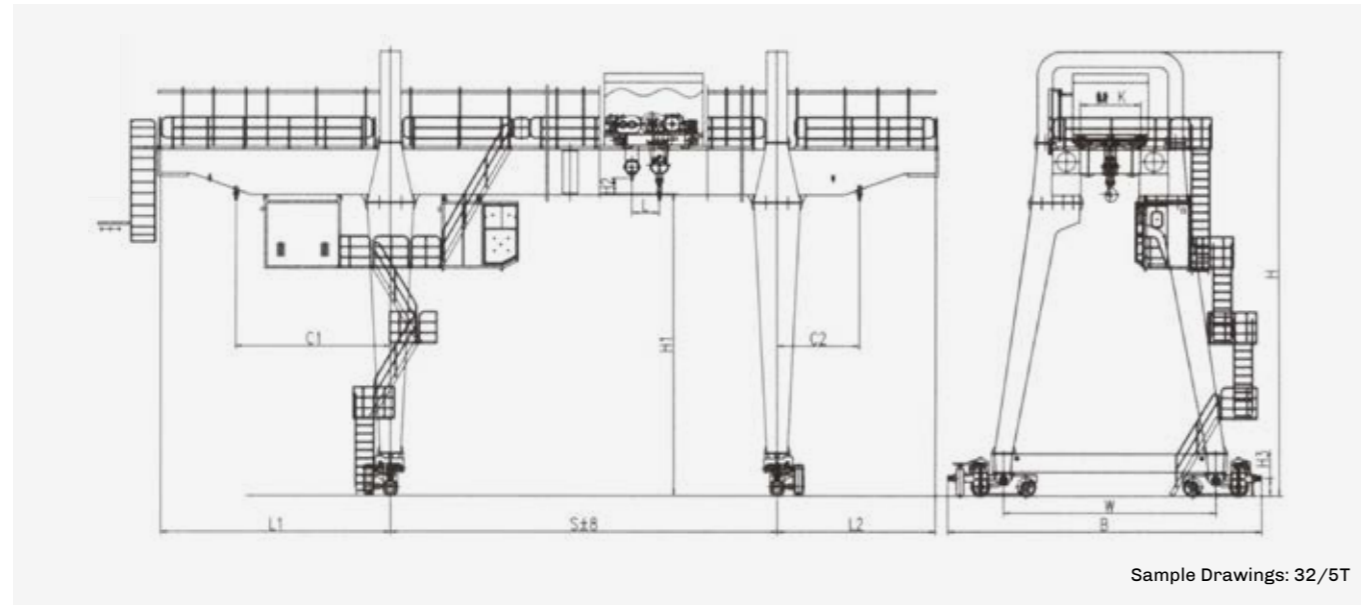


100t-S30m-H16m Double Girder Gantry Crane Exported to Uzbekistan



35t European Type Double Girder Gantry Crane Exported to Bangladesh

## Outer Size Diagram



## Technical Specifications

LIFTING CAPACITY (t)							
Main	5	10	20	32	50	75	100
Auxiliary	/	/	5	5	10	20	20
LIFTING HEIGHT (m)							
Main	12	12	12	12	12	12	12
Auxiliary	/	/	12.5	12.79	12.95	12.79	13.24
SPEED (m/min)							
Main	9.2	8.5	7.2	7.5	5.9	3.9	3.1
Auxiliary	/	/	12.7	12.7	8.5	7.2	7.2
Crab Travelling	37.2	37.2	36.6	29.8	31	38.4	33.9
Trolley Traveling	37.7	37.7	44	40	44	37	3.23-32.3
LIMT DIMENSTION (mm)							
L1	9000	9000	10000	10000	10500	10000	10000
L2	9000	9000	10000	10000	10500	10000	10000
L	/	/	900	980	1195	1150	1315
C1	7500	7500	7500	7500	7500	7000	7000
C2	7500	7500	7500	7500	7500	7000	7000
MAIN DIMENSTION (mm)							
H	15754	16644	17006	17258	17920	19324	19373
H1	12000	12000	12000	12000	12000	12000	12000
H2	/	/	500	790	950	790	1240
H3	540	660	700	700	700	500	590
B	8754	9850	10466	10668	11496	11780	13832
K	1400	2000	2000	2500	2500	4000	4000
W	7200	8000	8300	7000	7500	8000	9000
Max.Wheel Loading (KN)	230	280	402	285	380	240	320
Power (kw)	36.8	44.8	73	107	157.5	146	162

Tips: Take the span of 30m as an example.  
This is just a part of the reference, contact us to get more detailed product data for free!

## More Types Of Product Display





**Capacity: up to 200t**                      **Span Length: Up to 100m**  
**Cantilever Length: 5m-15m**              **Control Mode: Pendant control / Wireless remote control / Cabin control**  
**Applications: Open yard. Used typically for activities in steel warehouse, precast yards, construction sites, port, train station, power plant and other outdoor applications.**

In general, truss gantry crane have three kinds of uses:

First, trussed gantry crane usually used in concrete beam yard, for lift beam girder which is used in bridge build.

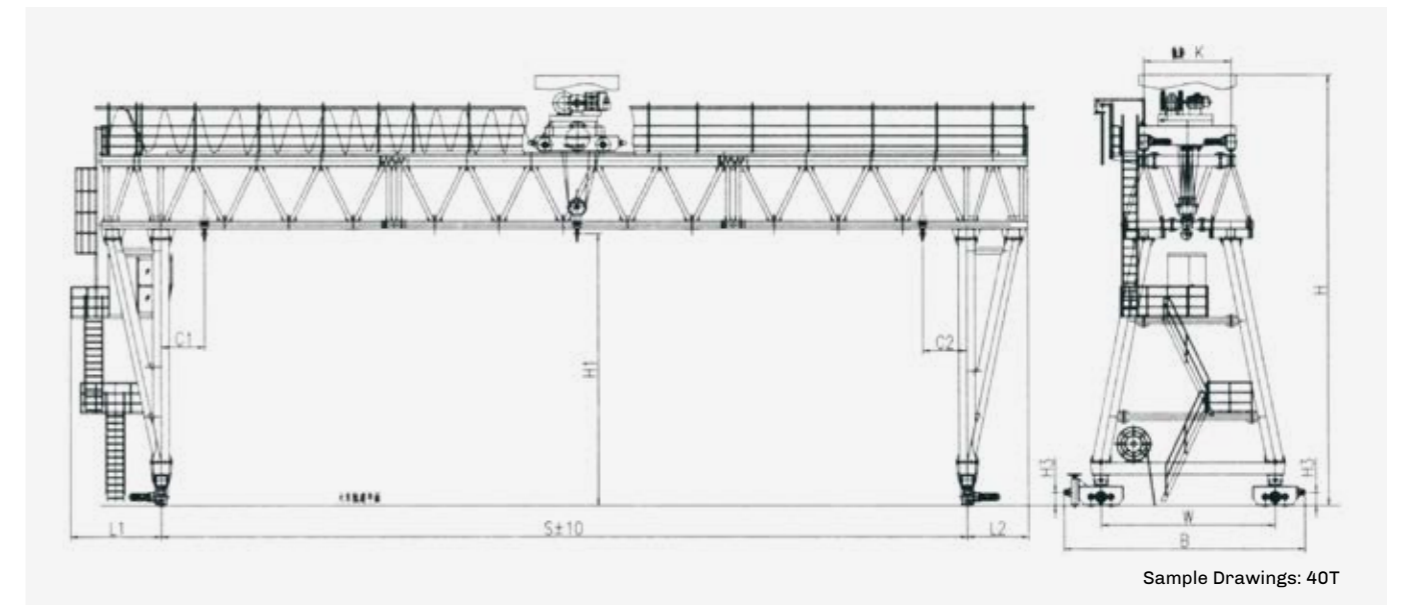
Second, trussed gantry crane will used near to the bridge approach, for construct bridge approach, after finished, engineer gantry crane also for lift concrete beam from ground transporter to bridge transporter, help launcher crane to build the whole bridge.

Third, engineer gantry crane is used for disassemble and re erect launcher crane. Advantage: Trussed structure can bear large wind pressure, best choice for open yard. Compared with ordinary gantry cranes, installation and disassembly are convenient and quick, economical and practical.

**Advantage: Trussed structure can bear large wind pressure, best choice for open yard. Compared with ordinary gantry cranes, installation and disassembly are convenient and quick, economical and practical.**



## Outer Size Diagram



## Technical Specifications

LIFTING CAPACITY (t)				
Main	40	60	80	100
Auxiliary	/	/	/	/
LIFTING HEIGHT (m)				
Main	9	9	9	12
Auxiliary	/	/	/	/
SPEED (m/min)				
Main	1	0.95	0.8	0.8
Auxiliary	/	/	/	/
Crab Travelling	10	10	10	10.5
Trolley Traveling	14	15	15	13
LIMIT DIMENSION (mm)				
L1	3200	3200	3200	3500
L2	500	500	500	650
L	/	/	/	/
C1	1500	2000	2000	2000
C2	2000	2000	2000	2000
MAIN DIMENSION (mm)				
H	14828	14828	14828	17466
H1	9000	9000	9000	12000
H2	/	/	/	/
H3	460	460	460	540
B	8286	8286	8286	12876
K	3000	3000	3000	3500
W	6000	6000	6000	7500
Max.Wheel Loading (KN)	190	260	305	205
Power (kw)	22.8	30	31.4	46.4

Tips: Take the span of 30m as an example.  
 This is just a part of the reference, contact us to get more detailed product data for free!

**Standing Jib Crane**



**Semi Gantry Cranes**



**BXQ Wall Travelling Jib Cranes**



**Adjustable Gantry Cranes**



**BZQ Wall Mounted Jib Cranes**



**Portable Gantry Cranes**



**Monorail Cranes**



**Winch**



**Drum**



**Doundry Crane**



**Hook**



**Grab**



**Crane Trolley**



**European Type Electric Hoists**

